

SERVICE DATA SHEET

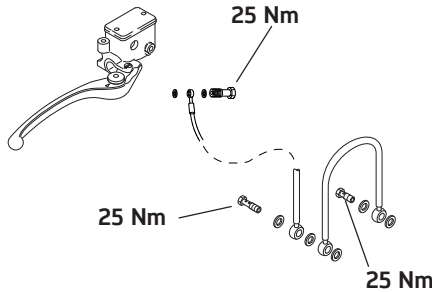
Tiger XR, XRt, XRx, XC, XCA, XCx

Brakes

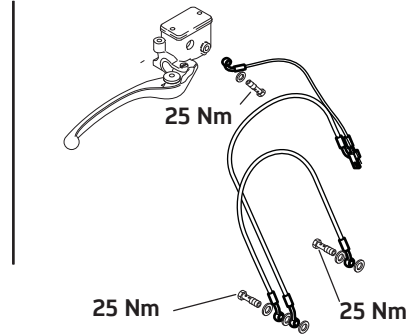
Brake disc maximum run out Front 0.15 mm - Rear 0.5 mm
 Brake disc minimum thickness Front 4.0 mm - Rear 5.0 mm
 Brake fluid DOT 4

Master Cylinders

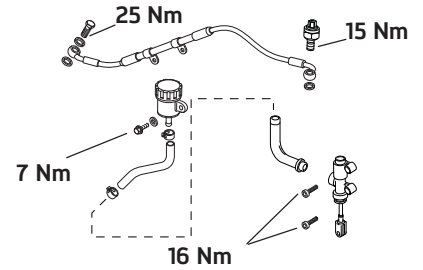
Front brake - Tiger XR, XRt, XRx



Front brake - Tiger XC, XCA, XCx

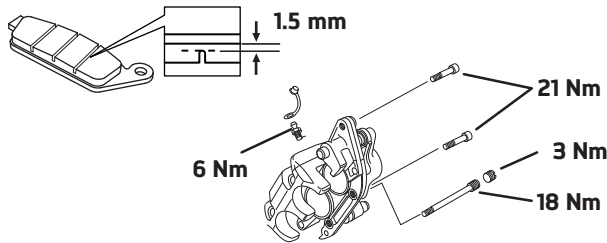


Rear brake all models

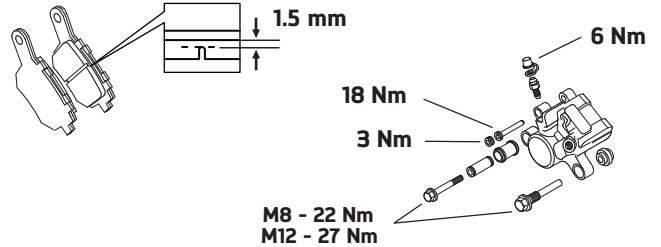


Calipers and Brake Pads

Front brake



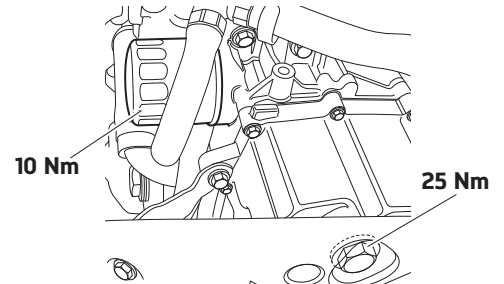
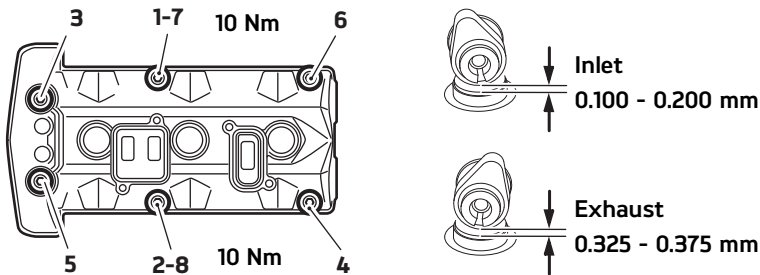
All Models



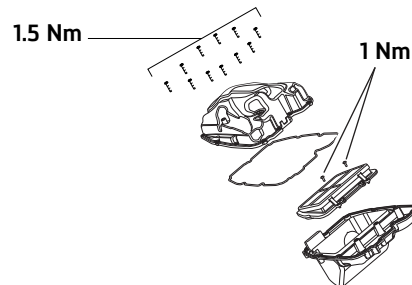
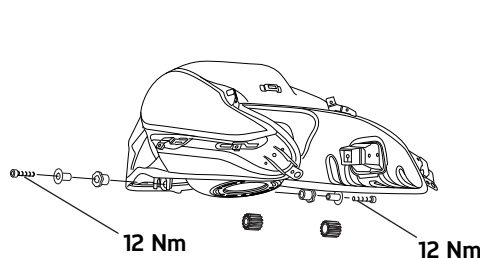
Rear brake

Engine and Lubrication

Oil Semi or fully synthetic 10W/40 or 10W/50 engine oil which meets specification API SH (or higher) and JASO MA. Triumph recommends Castrol Power 1 Racing 4T 10W/40 or 10W/50 (fully synthetic) engine oil, sold as Castrol Power RS Racing 4T 10W/40 or 10W/50 (fully synthetic) in some countries
 Oil quantity 3.6 litres (oil and filter change). Always refer to the check sight glass for the correct level
 Coolant type Triumph HD4X Hybrid OAT coolant (premixed as supplied by Triumph)
 Coolant capacity 2.69 litres
 Grease Grease to NLGI 2 specification
 Camshaft cover bolts Lubricate the seals for the camshaft cover bolts with clean engine oil
 Camshaft cover tightening sequence Tighten the camshaft cover bolts in the sequence shown below



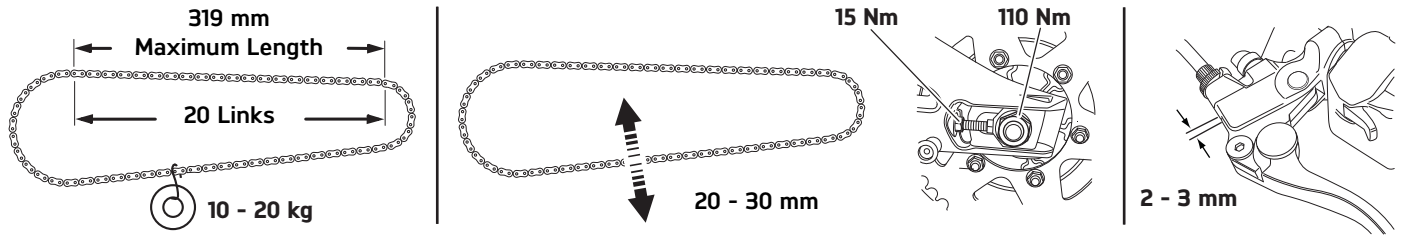
Fuel and Air



SERVICE DATA SHEET - continued

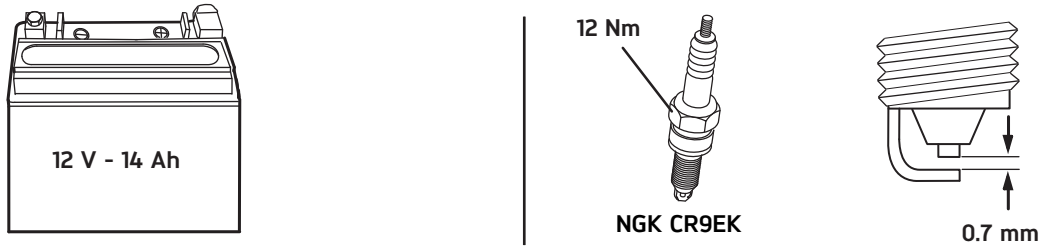
Final Drive and Clutch

Chain lubrication Chain spray suitable for O-ring chains



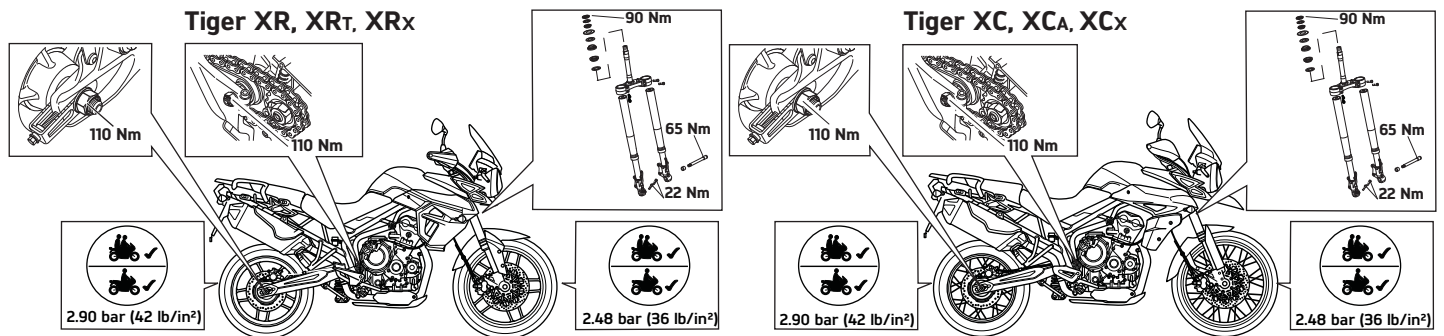
Battery and Ignition

Charge rate Must not exceed 1.4 A (refer to the Service Manual)



Suspension and Wheels

	Tiger XR, XRt, XRx	Tiger XC, XCa, XCx
Recommended fork oil grade	Showa SS8 (SAE10W)	WP 4860-1166 SAE4
Oil volume (dry fill)	553 cc	479 cc
Oil level (fork fully compressed)	103 mm	111 mm



Tyre Pressure (Off Road Use Only) Refer to the Owner's Handbook

Service Parts Information

Parts Information	Description	Odometer Reading in Miles (kms), Time Period				
		500 / (800) 1 month	Annual	6,000 (10,000) 18,000 (30,000)	12,000 (20,000)	24,000 (40,000)
For current parts information, refer to the Electronic Parts Catalogue	Sump Plug Washer	•	•	•	•	•
	Oil Filter	•	•	•	•	•
	Air Cleaner				•	•
	Spark Plug				•	•
	Camshaft Cover Seal					•
	Camshaft Cover Screw Seal				•	•
	Drive Chain Rubbing Strip			•	•	•
	Front Brake Pad Set - Tiger 800			As necessary		
Rear Brake Pad Set			As necessary			
Standard Service Time Allowance (Hrs.)		1.50	1.75	3.25	4.50	5.25