

SERVICE DATA SHEET

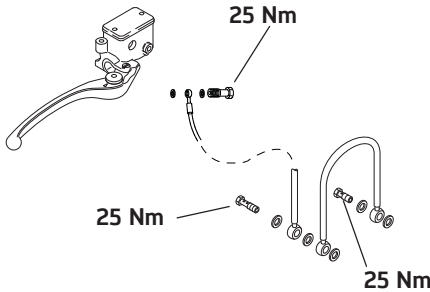
Tiger 800/800XC

Brakes

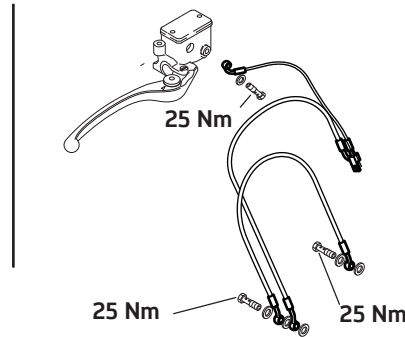
- Brake disc maximum run out 0.5 mm (front and rear)
- Brake disc minimum thickness Front 4.0 mm - Rear 5.5 mm
- Brake fluid DOT 4

Master Cylinders

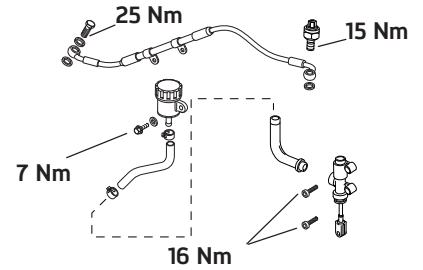
Front brake - Tiger 800



Front brake - Tiger 800 XC

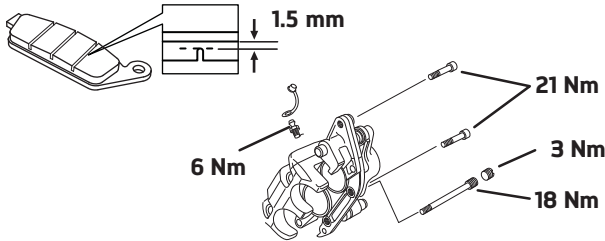


Rear brake all models

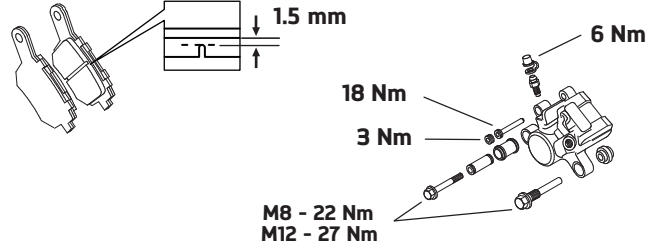


Calipers and Brake Pads

Front brake

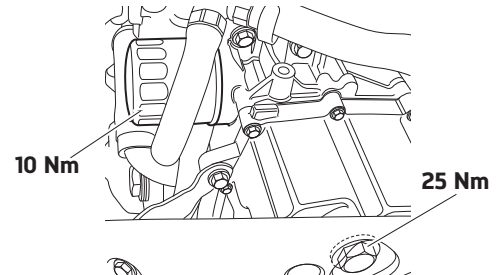
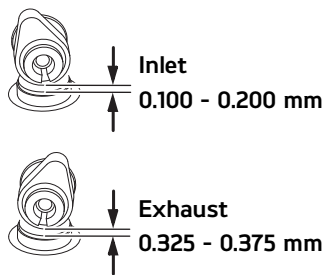
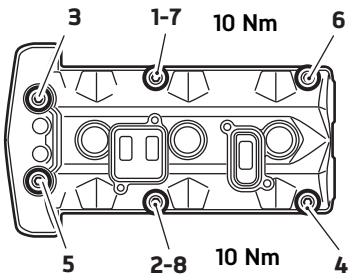


Both Models

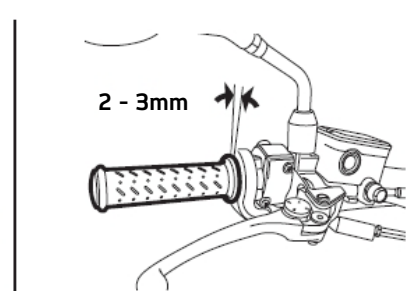
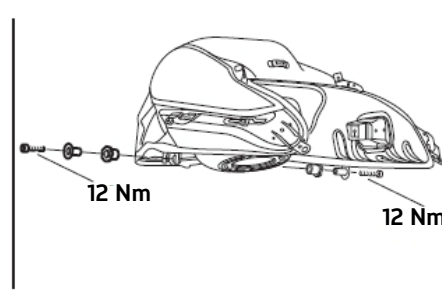
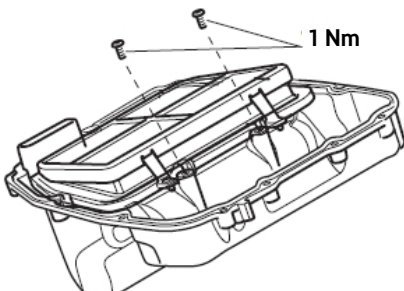


Engine and Lubrication

- Oil Semi or fully synthetic 10W/40 or 10W/50 engine oil which meets specification API SH (or higher) and JASO MA. Triumph recommends Castrol Power 1 Racing 4T 10W/40 or 10W/50 (fully synthetic) engine oil, sold as Castrol Power RS Racing 4T 10W/40 or 10W/50 (fully synthetic) in some countries
- Oil quantity 3.6 litres (oil and filter change). Always refer to the check sight glass for the correct level
- Coolant type Triumph HD4X Hybrid OAT coolant (premixed as supplied by Triumph)
- Coolant capacity 2.4 litres
- Grease Grease to NLGI 2 specification
- Camshaft cover bolts Lubricate the seals for the camshaft cover bolts with clean engine oil
- Camshaft cover tightening sequence Tighten the camshaft cover bolts in the sequence shown below



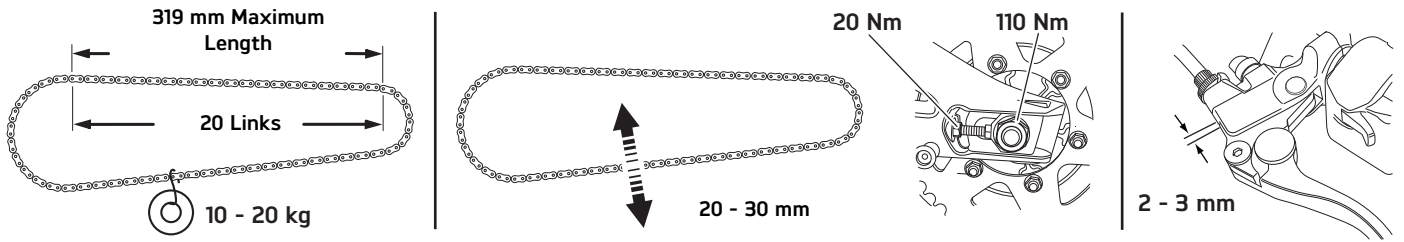
Fuel and Air



SERVICE DATA SHEET - continued

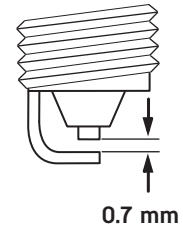
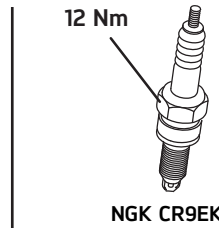
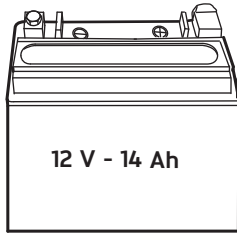
Final Drive and Clutch

Chain lubrication Chain spray suitable for O-ring chains



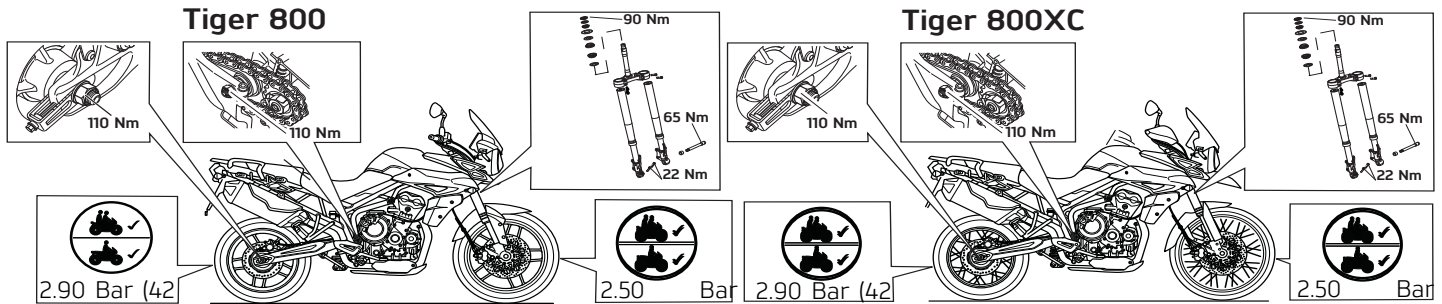
Battery and Ignition

Charge rate Must not exceed 1.4A (refer to the service manual)



Suspension and Wheels

	Tiger 800	Tiger 800XC
Recommended fork oil grade	Showa SS8 (SAE10W)	
Oil volume (dry fill)	553 cc	484 cc
Oil level (fork fully compressed)	103 mm	107 mm



Tyre Pressure (Off Road Use Only)

Refer to the owners manual

Service Parts Information

Parts Information	Description	Odometer Reading in Miles (kms), Time Period				
		500 / (800) 1 month	Annual	6,000 (10,000) 18,000 (30,000)	12,000 (20,000)	24,000 (40,000)
For current parts information, refer to the Electronic Parts Catalogue	Sump Plug Washer	•	•	•	•	•
	Oil Filter	•	•	•	•	•
	Air Cleaner				•	•
	Spark Plug				•	•
	Camshaft Cover Seal				•	•
	Camshaft Cover Screw Seal				•	•
	Front Brake Pad Set - Tiger 800			As necessary		
Rear Brake Pad Set			As necessary			
Standard Service Time Allowance (Hrs.)		1.50	1.75	3.25	4.50	5.25